

Ring Accelerator Physics for Non Accelerator Specialists

XFEL Research & Development Division
RIKEN SPring-8 Center
Hitoshi Tanaka

Cheiron School 2012@SPring-8

1

Outline

1. Introduction
2. Light source properties vs electron beam performance
3. Stochasticity of photoemission
4. Distribution of circulating electron beam
5. Approach to coherent X-rays

Cheiron School 2012@SPring-8

2

1. Introduction (1)

Even any member in an experiment-related division or BL scientists, who are not the accelerator specialists, should understand the relation between the SR properties and electron beam performances,

to keep the present experimental condition,
to improve the condition as much as possible,
and
to challenge new experiments by using the advanced SR.

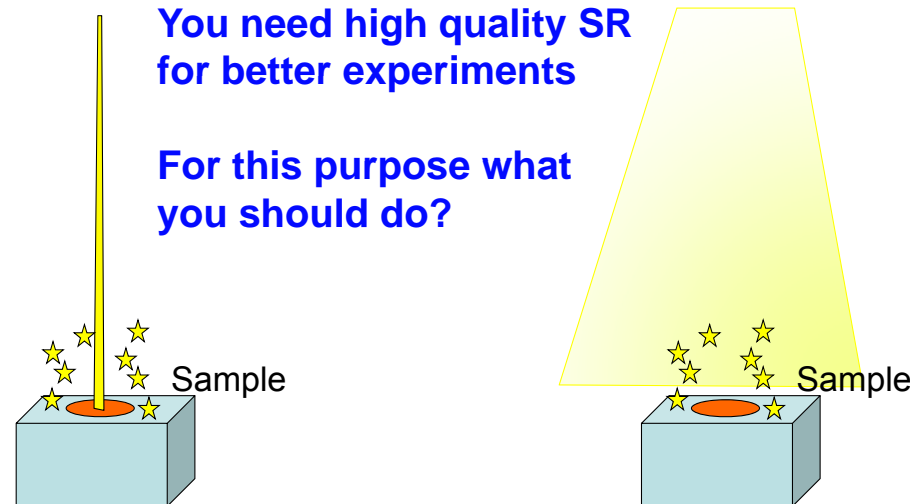
Cheiron School 2012@SPring-8

3

1. Introduction (2)

**You need high quality SR
for better experiments**

**For this purpose what
you should do?**

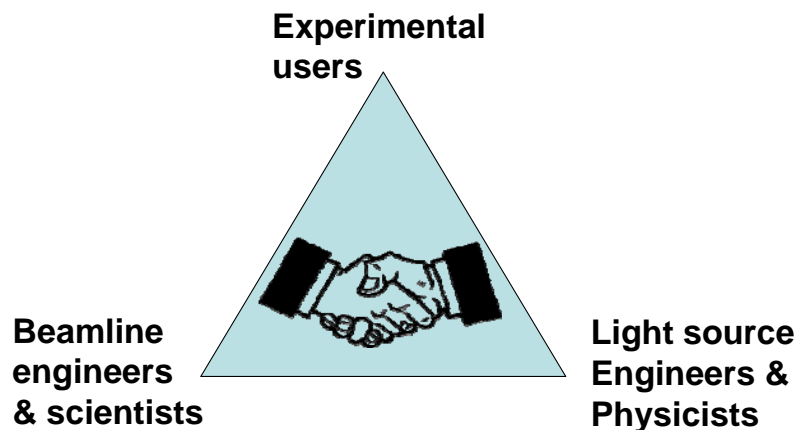


Cheiron School 2012@SPring-8

4

1. Introduction (3)

Mutual understanding through communication

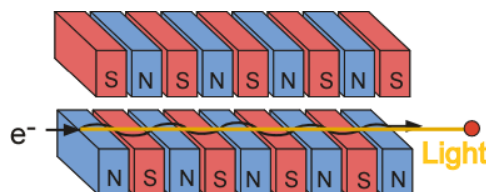


Outline

1. Introduction
2. **Light source properties vs electron beam performance**
3. Stochasticity of photoemission
4. Distribution of circulating electron beam
5. Extra: Approach to coherent X-rays

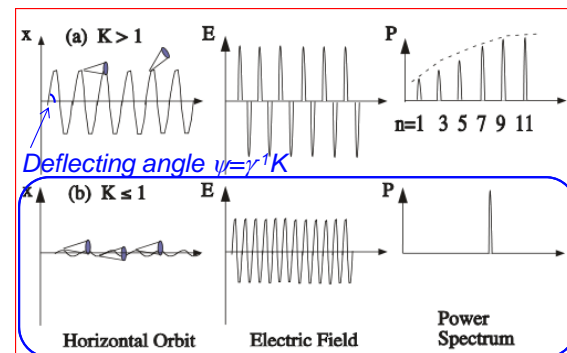
2. Light source properties vs electron beam performance(1)

Main devices to supply SR to users are “undulators”, which are installed in magnet-free straight sections in 3rd-generation SR sources.



2. Light source properties vs electron beam performance(2)

In an undulator, radiation from a single electron at each undulation interferes with each other.



Spectral narrowing by resonant condition for a single electron is

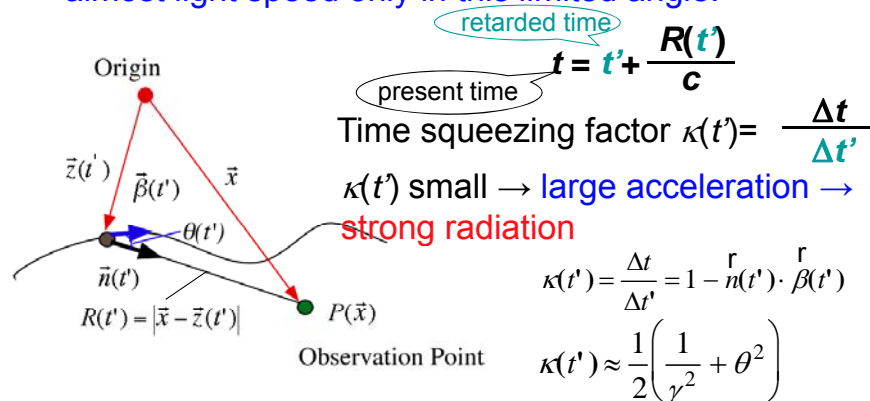
$$\lambda_1 = \frac{\lambda_u}{2\gamma^2} (1 + K^2/2 + \gamma^2\theta^2)$$

where K and γ are a deflecting parameter and relative energy.

2. Light source properties vs electron beam performance(3)

Q: Why does the radiation concentrate within the γ cone ?

A: The electron can run after the emitted light with the almost light speed only in this limited angle.



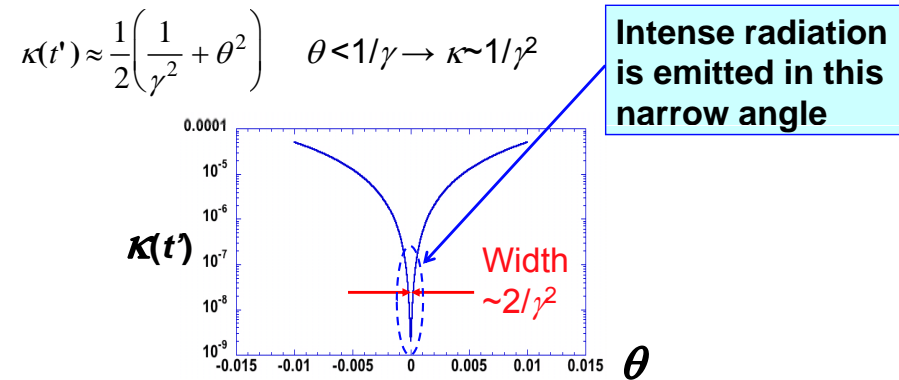
Cheiron School 2012@SPring-8

9

2. Light source properties vs electron beam performance(4)

Q: Why does the radiation concentrate within the γ cone ?

A: The electron runs after the emitted light with the almost light speed only in this limited angle.



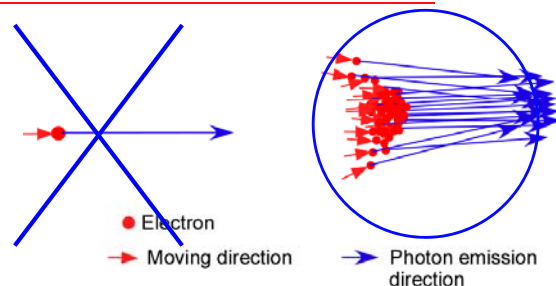
Cheiron School 2012@SPring-8

10

2. Light source properties vs electron beam performance(5)

If electron beam were point-like without spatial divergence and , all electrons could have no angular divergence, radiations were **coherent** !

Real radiation properties are obtained by convoluting radiations from all N electrons



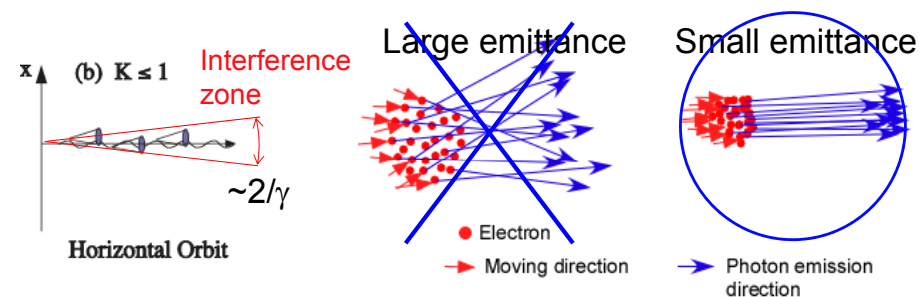
In the real world N electrons are distributed in a phase space, never degenerate on the same point.

Cheiron School 2012@SPring-8

11

2. Light source properties vs electron beam performance(6)

In order to obtain the same resonance condition over most of circulating electrons distributed, sufficiently **small beam emittance** is required.



Cheiron School 2012@SPring-8

12

2. Light source properties vs electron beam performance(7)

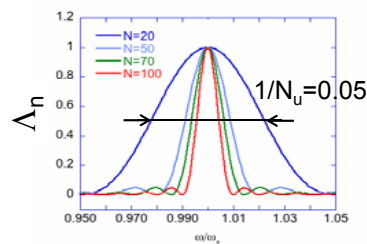
In order to obtain the same resonance condition over most of circulating electrons distributed, sufficiently **small beam energy spread** is required.

$$\lambda_1 = \frac{\lambda_u}{2(\gamma + \Delta\gamma)^2} (1 + K^2/2 + \gamma^2\theta^2)$$

N_u : undulator period number

$$\Delta\lambda_1 \sim 2\lambda_1 \langle \Delta\gamma/\gamma \rangle$$

Spectral broadening by the energy spread is much less than intrinsic broadening $\sim 1/N_u$.



2. Light source properties vs electron beam performance(8)

$$B \propto \frac{I_b \cdot N_u^2 \cdot \gamma^2 \cdot F_n(K, \delta)}{\sigma_x \sigma_x' \sigma_y \sigma_y' (\sim \epsilon_x \cdot \epsilon_y)}$$

B: Brilliance (phs/sec/mm²/mrad²/100mA)

I_b : Beam current (mA)

N_u : Undulator period number

σ_x, σ_y : Horizontal and vertical beam sizes (m)

σ_x', σ_y' : Horizontal and vertical angular divergence (rad)

δ : Beam energy spread

K: Deflection parameter

2. Light source properties vs electron beam performance(9)

$$\sigma_x = \sqrt{\sigma_p^2 + \beta_x \epsilon_x + \eta_x^2 \delta^2}, \quad \sigma_x' = \sqrt{\sigma_p'^2 + \gamma_x \epsilon_x + \eta_x'^2 \delta^2}, \quad \text{Photon}$$

$$\sigma_y = \sqrt{\sigma_p^2 + \beta_y \epsilon_y + \eta_y^2 \delta^2}, \quad \sigma_y' = \sqrt{\sigma_p'^2 + \gamma_y \epsilon_y + \eta_y'^2 \delta^2}, \quad \text{Electron emittance}$$

$$\alpha_{x,y} = \frac{-d\beta_{x,y}}{ds}, \quad \gamma_{x,y} = \frac{1 + \alpha_{x,y}^2}{\beta_{x,y}}, \quad \eta'_{x,y} = \frac{d\eta_{x,y}}{ds}. \quad \text{Electron energy spread}$$

ϵ_x, ϵ_y : Horizontal and vertical emittance (m•rad)

$\beta_{x,y}$: Horizontal and vertical betatron functions at ID

$\eta_{x,y}$: Horizontal and vertical dispersion functions at ID

σ_p, σ_p' : Spatial and angular divergence of photon beam

Outline

1. Introduction
2. Light source properties vs electron beam performance
- 3. Stochasticity of photoemission**
4. Distribution of circulating electron beam
5. Extra: Approach to coherent X-rays

3. Stochasticity of photoemission(1)

The photo-emission process is **not continuous**, in other words, **quantized process**. So, the emission position, the number of the emission photons, and the emission photon energy have **fluctuations**.

This stochasticity (random fluctuation) causes finite spread of the circulating electron beam in the 6D phase space. The density distribution is generally Gaussian due to the central limit theorem.



Cheiron School 2012@SPring-8



17

3. Stochasticity of photoemission(2)

A relativistic electron accelerated in a magnetic field will radiate electromagnetic energy at a rate which is proportional to the square of the accelerating force.

<Averaged radiation power>

$$P = \frac{2}{3} \frac{r_e c}{(m_0 c^2)^3} E^2 F_{\perp}^2 = \frac{2}{3} \frac{r_e c}{(m_0 c^2)^3} \frac{E^4}{\rho^2}$$

classical electron radius

<Averaged radiation energy per turn>

$$U = \int P dt = \int P \frac{L d\ell}{c}$$

Averaged properties are smooth !

$$U(\text{keV}) = \frac{88.5 E^4 (\text{GeV})}{\rho(\text{m})} \text{ for the case with the constant } \rho.$$

Cheiron School 2012@SPring-8

18

3. Stochasticity of photoemission(3)

In the quantized radiation process, the integrated parameter, energy loss per unit time also fluctuates. Magnitude of the fluctuation can be defined by a mean square.

<Mean square of energy loss fluctuation per unit time>

$$\langle N u^2 \rangle = \frac{55}{24\sqrt{3}} \frac{U}{T} u_c, \quad u_c = \frac{3}{2} \frac{\hbar c}{\rho} \gamma^3.$$

u_c : critical photon energy $\sim 3.2 \langle u \rangle$

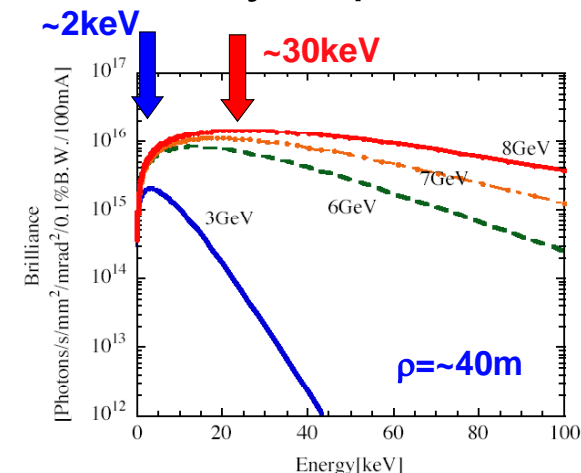
<Averaged photo-emission rate>

$$\langle N \rangle (\text{phs/s}) \sim 3.2 P / u_c$$

Cheiron School 2012@SPring-8

19

3. Stochasticity of photoemission(4)



u_c represents the photon energy at the peak brilliance of the BM radiation.

Cheiron School 2012@SPring-8

20

3. Stochasticity of photoemission(5)

Let's estimate the parameters!

<Case-1 E=1 GeV, ρ=5m>

$$U(\text{keV}) = \frac{88.5 \times 14}{5} = 17.7, \quad P(\text{keV/s}) = \frac{U}{T=2\pi \times 5/c} = 1.7 \times 10^8$$

$$u_c(\text{keV}) = \frac{3}{2} \frac{6.85 \times 10^{-19} \times 2.998 \times 10^8 \times 1957^3}{5} = \mathbf{0.44}$$

$$\langle Nu^2 \rangle (\text{keV}^2/\text{s}) = \frac{55}{24\sqrt{3}} 1.7 \times 10^8 \times 0.44 = 0.99 \times 10^8$$

$$\langle N \rangle (\text{photons/s}) \sim 3.2 \times 1.7 \times 10^8 / 0.44 = \mathbf{1.2 \times 10^9}$$

3. Stochasticity of photoemission(6)

SPring-8 parameter is the next example.

<Case-2 E=8 GeV, ρ=40m>

$$U(\text{keV}) = \frac{88.5 \times 8^4}{40} = 9.1 \times 10^3, \quad P(\text{keV/s}) = \frac{U}{T=2\pi \times 40/c} = 1.1 \times 10^{10}$$

$$u_c(\text{keV}) = \frac{3}{2} \frac{6.85 \times 10^{-19} \times 2.998 \times 10^8 \times 15656^3}{40} = \mathbf{29.6}$$

$$\langle Nu^2 \rangle (\text{keV}^2/\text{s}) = \frac{55}{24\sqrt{3}} 1.1 \times 10^{10} \times 29.6 = 4.31 \times 10^{11}$$

$$\langle N \rangle (\text{photons/s}) \sim 3.2 \times 1.1 \times 10^{10} / 29.6 = \mathbf{1.2 \times 10^9}$$

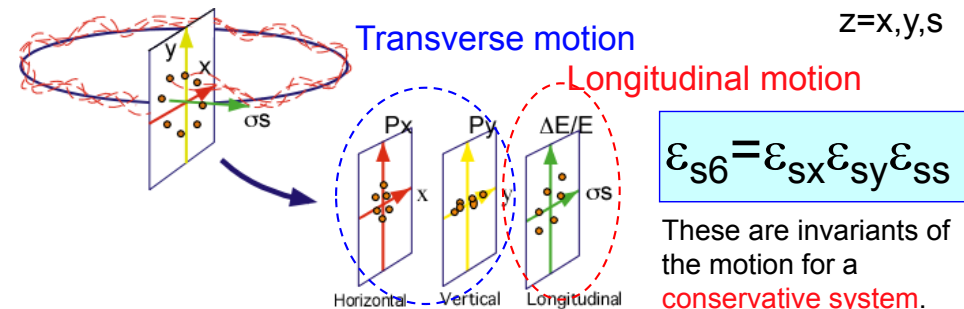
Outline

1. Introduction
2. Light source properties vs electron beam performance
3. Stochasticity of photoemission
4. Distribution of circulating electron beam
5. Extra: Approach to coherent X-rays

4. Distribution of circulating electron beam(1)

6D-phase space volume of a single electron, \mathcal{E}_{s6} comprises of canonical variables $(x, px(x'), y, py(y'), t, ps(\Delta E/E))$.

In an ideal case, 6D-phase space volume can be written by the product of areas of the three orthogonal 2D spaces \mathcal{E}_{sZ} .



4. Distribution of circulating electron beam(2)

You can understand the **relation between the 2D phase space and the emittance** by using a simple harmonic oscillator.

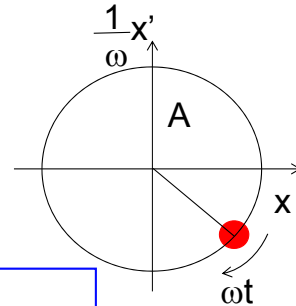
$$x = A \cdot \cos(\omega t + \phi_0)$$

$$\frac{dx}{dt} = x' = -A \cdot \omega \sin(\omega t + \phi_0)$$

$$\rightarrow \frac{1}{\omega} \frac{dx}{dt} = -A \cdot \sin(\omega t + \phi_0)$$

Action=A, Angle= $\phi = \omega t + \phi_0$,

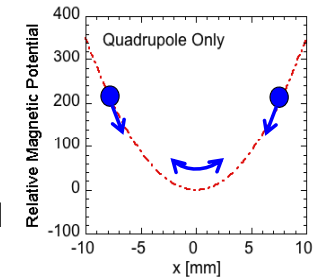
$$\text{Invariant} = x^2 + (x'/\omega)^2 = A^2 = \frac{\text{circle area}}{\pi} = \epsilon_{sx}$$



4. Distribution of circulating electron beam(3)

We need **potential wells to stabilize three orthogonal oscillation modes** to keep electron beam in a storage ring.

Quadrupole magnets generate the adequate potential wells for two transversal oscillation modes, which are called **betatron oscillations** in the horizontal and vertical planes. **RF acceleration electric field** generates the adequate potential well for longitudinal oscillation mode, which is called a synchrotron oscillation.



4. Distribution of circulating electron beam(4)

SR light properties reflects the 3x2D phase space distribution of circulating electrons.

We use the following **three ensemble-averaged emittances** to express beam distribution in three orthogonal phase spaces.

$$\langle \epsilon_{s6} \rangle = \langle \epsilon_{sx} \rangle \langle \epsilon_{sy} \rangle \langle \epsilon_{ss} \rangle$$

$$= \epsilon_x \epsilon_y \epsilon_s,$$

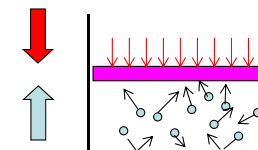
ϵ_x : horizontal emittance (m rad)

ϵ_y : vertical emittance (m rad)

ϵ_s : longitudinal emittance (m rad)

4. Distribution of circulating electron beam(5)

Width of the Gaussian distribution of N circulating electrons is determined by the **dynamical equilibrium between the radiation excitation and damping.**



4. Distribution of circulating electron beam(6)

Remember the invariant of a harmonic oscillator.

$$\frac{d\langle A^2 \rangle}{dt} = \frac{d\varepsilon_z}{dt} \quad z = x, y, s.$$

Equilibrium condition:

$$\frac{d\langle A^2 \rangle}{dt} = \lim_{\Delta t \rightarrow 0} \frac{\langle (A + \Delta A)^2 - A^2 \rangle}{\Delta t} = \lim_{\Delta t \rightarrow 0} 2 \frac{\langle \Delta A \Delta A \rangle}{\Delta t} + \lim_{\Delta t \rightarrow 0} \frac{\langle \Delta A^2 \rangle}{\Delta t} = 0$$

Damping term
Averaged energy dissipation

Excitation term
Quantum effect

4. Distribution of circulating electron beam(7)

Energy spread $\sigma_{\Delta E}$

$$\lim_{\Delta t \rightarrow 0} 2 \frac{\langle \Delta A \Delta A \rangle}{\Delta t} = -2 \frac{\langle A^2 \rangle}{\tau_\varepsilon}, \quad \tau_\varepsilon = \frac{E \times T}{U},$$

$$\lim_{\Delta t \rightarrow 0} \frac{\langle \Delta A^2 \rangle}{\Delta t} = \langle N u^2 \rangle = \frac{55}{24\sqrt{3}} \frac{U}{T} u_c.$$

Since $\sigma_{\Delta E}$ is **not the emittance**, phase average factor should be considered, $\sigma_{\Delta E}^2 = \frac{\langle A^2 \rangle}{2}$,

$$\sigma_{\Delta E} = \sqrt{\frac{55}{96\sqrt{3}} E \times u_c}, \quad \sigma_{\Delta E/E} = \sqrt{\frac{55}{96\sqrt{3}} \frac{u_c}{E}}.$$

4. Distribution of circulating electron beam(8)

Bunch length σ_τ

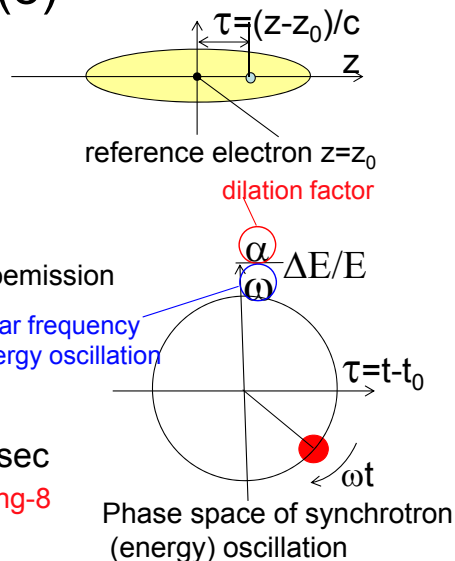
σ_τ has two components;

$\sigma_{\tau 1}$ = time spread by energy spread

$\sigma_{\tau 2}$ = time spread by stochastic photoemission

$\sigma_{\tau 1} \gg \sigma_{\tau 2}$

$$\sigma_\tau = \frac{\alpha}{\omega} \sigma_{\Delta E/E} = \sim 10 \text{ psec} \quad @ \text{SPring-8}$$

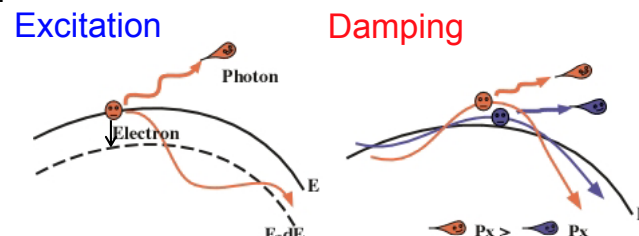


4. Distribution of circulating electron beam(9)

Horizontal emittance ε_x

Excitation: due to the discrete energy jump + energy dispersion

Damping: due to the decrease of transverse momentum by the photoemission + acceleration along the running direction



4. Distribution of circulating electron beam(10)

For the typical magnetic lattice structure (Chasman Green: CG) based storage ring, the horizontal minimum emittance is written by

$$\begin{aligned} \epsilon_{x \text{ min @general}} &\sim \frac{1}{2} \epsilon_{x \text{ min @achromat}} \\ &= \frac{C_q \gamma^2}{8\sqrt{15} J_x} \theta_b^3 \end{aligned}$$

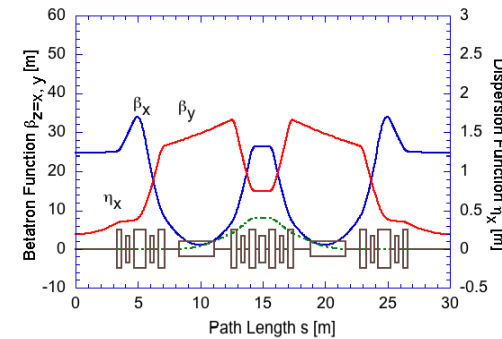
C_q : Quantum constant 3.832×10^{-13} (m)

θ_b : Deflection angle of a single bending magnet (rad)

J_x : Horizontal damping partition number ~ 1

4. Distribution of circulating electron beam(11)

Chasman-Green (CG) lattice is the most popular magnet cell structure for a low emittance SR source, where a achromatic arc is composed of a pair of bending magnets.



2 bends: CG or CBA

3 bends: TBA

4 bends: QBA

$\epsilon_{x \text{ min}} \propto \theta_b^3$ θ_b smaller with same cell No.

4. Distribution of circulating electron beam(12)

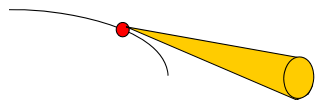
Vertical emittance ϵ_y

ϵ_y has two components;

ϵ_{y1} = vertical emittance by stochastic photoemission

ϵ_{y2} = vertical emittance by HV coupling

Usually, $\epsilon_{y1} \ll \epsilon_{y2}$



The Angular divergence
In the vertical plane is $\sim 1/\gamma$

1-GeV storage ring

$\gamma = 1000/0.511 \sim 2000$

$1/\gamma \sim 5 \times 10^{-4}$

Principally, $\epsilon_y = 1/1000 \epsilon_x$
is possible

4. Distribution of circulating electron beam(13)

Vertical emittance is determined by magnetic error components mixing the horizontal and vertical betatron oscillation. The main sources are vertical misalignments of sextupole magnets and rotational errors of quadrupole magnets.

The effect of these error fields can be corrected to **0.1 % level** by the combination of beam response analysis and skew quadrupole corrector magnets.

One-dimensional diffraction limited X-ray beam is now available

Outline

1. Introduction
2. Light source properties vs electron beam performance
3. Stochasticity of photoemission
4. Distribution of circulating electron beam
5. Approach to coherent X-rays

5. Approach to coherent X-rays (1)

Q: How much is a coherent component of SR?

A: 0.1% at SPring-8

5. Approach to coherent X-rays (2)

Q: How to estimate?

A: Roughly, the ratio R is

$$\frac{\sigma_p^2 \sigma_{p'}^2}{\sigma_x \sigma_y \sigma_{x'} \sigma_{y'}}$$

$$\sigma_p \sigma_{p'} = \lambda / 4\pi$$

$$\sigma_p = \sqrt{\frac{N \lambda_u \lambda_k}{4\pi}}$$

$$\sigma_{p'} = \sqrt{\frac{\lambda_k}{N \lambda_u}}$$

5. Approach to coherent X-rays (3)

R is unity at maximum, which we call "diffraction limit".

$$\sigma_x \sim \sigma_p \quad \sigma_{x'} \sim \sigma_{p'}$$

$$\sigma_y \sim \sigma_p \quad \sigma_{y'} \sim \sigma_{p'}$$

5. Approach to coherent X-rays (4)

Electron beam emittance required for diffraction limit at a wavelength of 0.1nm.

$$\sigma_p \sigma_{p'} = \lambda / 4\pi = 8 \times 10^{-12} \sim 10 \text{ pm rad}$$

We assume $N=900$, $\lambda u=32\text{mm}$, $E=8 \text{ GeV} (\gamma=15656)$

$$\sigma_p = 0.06/\gamma, \sigma_{p'} = 0.03/\gamma \quad \square \quad \sigma_p = 4\mu\text{m}, \sigma_{p'} = 2\mu\text{rad}$$

5. Approach to coherent X-rays (5)

➡ Electron beam emittance required is $\sim 10 \text{ pmrad}$

The present value achieved at 3rd Gen SR is $\sim 1 \text{ nmrad}$

To obtain spatially coherent X-ray, the electron beam emittance should be reduced by 2~3 orders of magnitude

5. Approach to coherent X-rays (6)

At present, we use “ a linear accelerator” without no recoil by radiation + a low emittance electron source + a bunch compressor + a long undulator, which can realize the diffraction limited X-rays at 0.1 nm by using a SASE process.

How about the possibility of Ultra-low emittance storage ring?